

Crochet An Old Time Christmas!

Finished Size: 10" tall

Abbreviations used: ch – chain, st(s) – stitches, sc – single crochet, hdc – half double crochet, dc – double crochet, trc – triple crochet, dtr – double triple crochet.

MATERIALS

- Crochet Cotton, # 5 (such as Knit-Cro-Sheen, bedspread thread, etc), two balls.
- Steel crochet hook, size 7.
- Foam cone: 9" and 3" tall; flat sheet of foam.
- Plastic wrap. Rust - resistant straight pins. Small piece of white cardboard.
- Beads (for ornaments).
- Elmer's White Glue – All Glue (for fabric stiffener). Hot glue gun and glue sticks.

1 Crochet,

Top of tree (made separately and glued to top of tree base).

Ch 5, sl st to form a ring.

Rnd 1. Ch 4, trc in ring 20 times (21 trc). Sl st to join.

Rnd 2. Ch 1, sc in same st. Ch 3, sc in next trc. Repeat from * around. For the last ch 3 loop, ch 1, hdc in first ch 1, sc st to join.

Rnd 3. Ch 1, sc in same ch 3 loop. * Ch 3, sc in next ch 3 loop. Repeat from * around. Join as before.

Rnds 4 – 6. Repeat **Rnd 3.**

Rnd 7. Ch 7, sl st in 4th ch from hook, dc in same ch 3 loop. Ch 2, * dc in next ch 3 loop, ch 4, sl st in top of dc, dc in same ch 3 loop. Ch 2. Repeat from * around, Sl st to join. Tie off.

Tree base (beginning at the top). Ch 5, sl st to form a ring.

Rnd 1. Ch 4, trc in ring 20 times (21) trc. Sl st to join.

Rnd 2. Ch 4, trc in each trc around. Sl st to join.

Rnd 3. Ch 5, trc in next trc, * ch 1, trc in next trc. Repeat from * around. Ch 1. Sl st to join.

Rnds 4 – 9. Repeat **Rnd 3**.

Rnd 10. Ch 6, trc in next trc. * Ch 2, trc in next trc. Repeat from * around. Ch 2. Sl st in 4th ch of ch 6 to join.

Rnds 11 – 16. Repeat **Rnd 10**.

Rnd 17. Ch 7, trc in next trc. * Ch 3, trc in next trc. Repeat from * around. Ch 3. Sl st in 4th ch of ch 7 to join.

Rnds 18 – 19. Repeat **Rnd 17**.

Rnd 20 (beginning of bottom ruffle). Ch 1, sc in same st. * Ch4, sc in next ch 3 space. Ch 4, sc in same space, ch 4, sc in same space, ch 4, sc in next trc*. Repeat from * around ending with ch 1, dc in ch 1, sc to join.

Rnd 21. Ch 1, sc in same st, * Ch 4, sc in next ch 4 space. Repeat from * around. Join as before with a ch 1, dc in ch 1, sc.

Rnds 22 – 24. Repeat **Rnd 21**.

Rnd 25. Ch 7, sl st in 4th ch of ch 7. Dc in same st as first ch 7, ch 2, * dc in next ch 4 loop, ch 4, sl st in top of last dc, dc in same ch 4 loop, ch 2. Repeat from * around. Sl st in 3rd ch of ch 7 to join; tie off (bottom ruffle completed). Attach thread to trc of 3rd space up from beginning bottom ruffle (Fig. 1); repeat Rnds 20 through 25 (second ruffle completed).

Rnd 26. Attach thread to trc 3 spaces up from last ruffle made. Ch 1, sc in same st, ch 4, sc in next ch 2 loop, ch 4, sc in same loop, ch 4, sc in same loop, ch 4, sc in next ch 2 loop*. Repeat from * around, Ch 1, dc in first ch 1, sc to join.

Rnd 27. Ch 1, sc in same st. * Ch 4, sc in next ch 4 loop. Repeat from * around. Join as before with ch 1, dc in ch 1 sc.

Rnds 28 – 30, Repeat **Rnd 27**.

Rnd 31. Ch 7, sl st in 4th ch of ch 7, dc in same st as first ch 7, ch 2, * dc in next ch 4 loop, ch 4, sl st in top of last dc, dc in same ch 4 loop, ch 2. Repeat from * around, Sl st in 3rd ch of ch 7 to join. Tie off (third ruffle completed). Attach thread to trc 3 spaces up from last ruffle made; repeat **Rnds 26** through **31** (fourth ruffle completed).

Rnd 32. Attach thread to trc 3 spaces up from last ruffle made. Ch 1, sc in same st, ch 3, sc in next ch 2 loop, ch 3, sc in same loop, ch 3, sc in next ch 2 loop. * Ch 3, sc in same loop, ch 3, sc in same loop, ch 3, sc in next ch 2 loop. Repeat from * around. Join as before, with ch 1, hdc in first ch 1, sc st (fifth ruffle completed).

Rnd 33. Ch 1, sc in same st. * Ch 3, sc in next ch 3 loop. Repeat from * around; join as before.

Rnds 34 – 36. Repeat **Rnd 33**.

Rnd 37. Ch 7, sl st in 4th ch of ch 7. Dc in same st as ch 7. Ch 2, * dc in next ch 3 loop, ch 4, sl st in top of dc, dc in same ch 3 loop. Ch 2. Repeat from * around; sl st to jon. Tie off (top ruffle completed).

Trunk. Ch 25, sl st to form a ring.

Rnd 1. Ch 3, dc in same ch. Work 2 dc in each ch st around. Sl st to join (50) dc.

Rnd 2. Ch 3, work 1 dc in each dc around. Sl st to join.

Rnd 3. Ch 3, dc in same st, * dc in next dc, 2 dc in next dc. Repeat from * around. Sl st to join.

Rnd 4. Ch 3, dc in same st, * dc in each of next 2 dc, 2 dc in next dc. * Repeat from * around. Sl st to join.

Rnd 5. Ch 3, dc in each dc around. Sl st to join.

Rnd 6. Ch 2, hdc in same st, * hdc in each of next 5 dc, 2 hdc in next dc. Repeat from * around. Sl st to join; tie off.

Rnd 7. Attach thread to inside of circle. Ch 3, dc in each st around. Sl st to join.

Rnds 8 – 9. Ch 3, dc in each st around. Sl st to join.

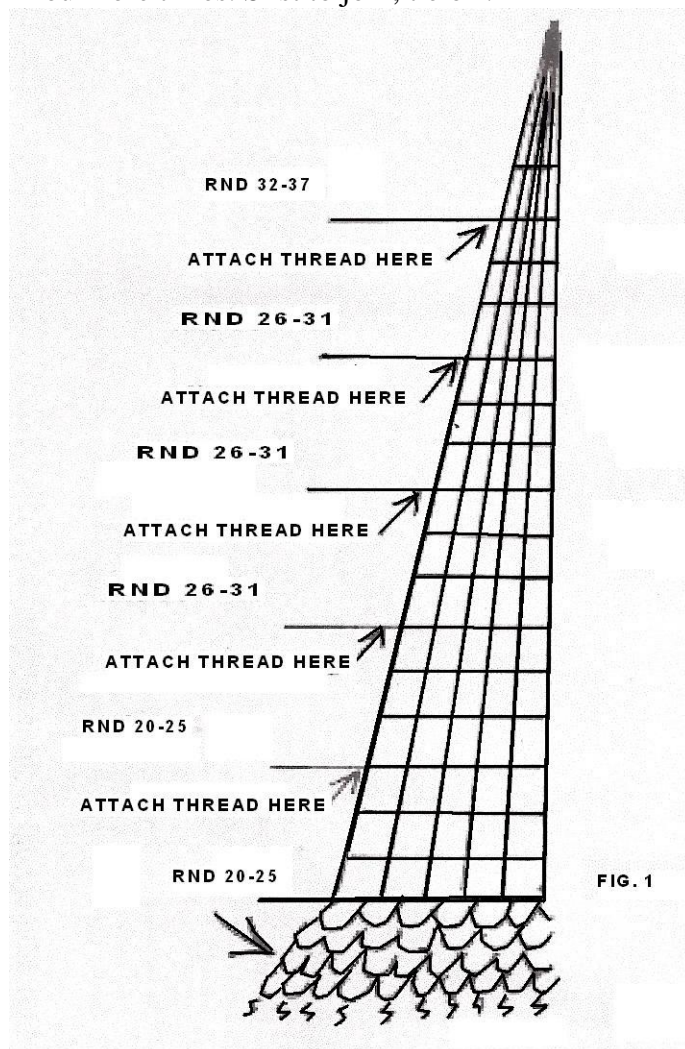
Rnd 10. Ch 4, trc in same st, trc in next dc, * 2 trc in next dc, trc in next dc. Repeat from * around. Sl st to join.

Rnd 11. Ch 4, trc in each trc around. Sl st to join.

Rnd 12. Hdc in each st around. Sl st to join; tie off.

Star. Ch 4, sl st to form a ring.

Rnd 1. * CH 3, trc in ring, ch 3, sl st in top of trc, trc in ring, ch 3, sc in ring. Repeat from * four more times. Sl st to join; tie off.



<http://www.pattern-making.com/>

2 Stiffen and shape. (Note: Cover foam with plastic wrap before shaping crocheted piece for easy release when dry. Some molding by hand is required during drying to

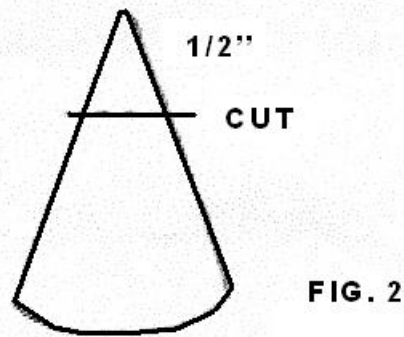
obtain proper shape. Keep a damp washcloth handy for wiping glue off your hands as you do the shaping.)

In a bowl, mix the stiffening solution as follows: Four parts glue to one part water. Mix well. Dip crocheted pieces into solution, then squeeze out excess glue. Roll in a paper towel to blot out the rest of the glue.

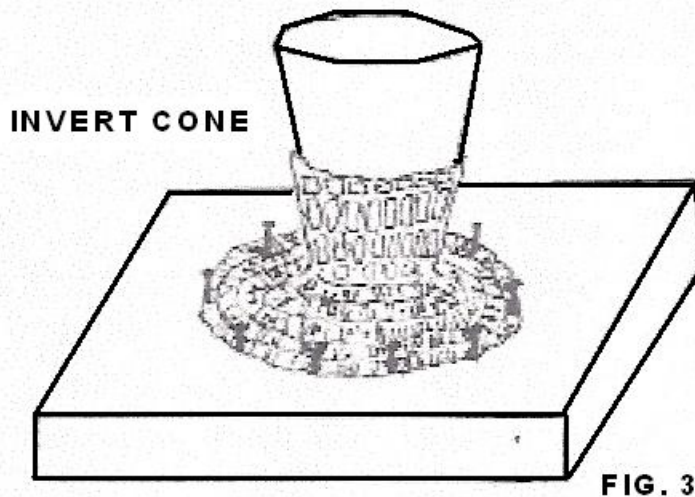
Place the tree over the foam cone. Allow to dry a little before starting to shape. Pinch and pull out ruffle, about every inch to form the “branches”; pin between each branch. Repeat for remaining ruffles, pinning all the way around the cone.

Place a small piece of plastic wrap in the center peak of the separate piece that is the top of the tree. Place this piece on top of foam cone. Shape and pin as before. Pin the star flat on another piece of foam.

For the tree trunk, cut off the pointed end of a 3" foam cone (Fig. 2). Invert the cone and



place inside center of trunk to shape. Pin the bottom circle of trunk to a flat piece of foam (Fig. 3). Let all pieces dry thoroughly



3 Finishing. Remove stiffened pieces from foam bases. Glue trunk base to a circle of cardboard cut the same the same size. If you plan to wire the tree with lights, make a hole in the center of cardboard, so wires will fit up into trunk.

Place tree over trunk; glue top of tree in place. Glue star to top of tree.

Crochet An Old time Christmas

A three – part scene for the crocheter with some experience.

**Recommended for crocheters
with some experience.**

Finished size: 6 ½ " tall.

Abbreviations used: ch – chain, st(s) – stitch(es), sc – single crochet, hdc – half double crochet, dc – double crochet, trc – triple crochet, dtr – double triple crochet.

MATERIALS (For both projects)

- Crochet cotton, #5 (such as Knit- Cro- Sheen, bedspread thread, etc.) two balls.
- Steel crochet hook, size 7.
- White macramé yarn (for hair).
- Chenille stems, eight.
- Dowel rod, ¼ " diameter, 4" long, two.
- Plastic wrap. Rust – resistant straight pins.
- Styrofoam: eggs, 1" diameter, four; cone, 4" high; flat pieces for individual bases.
- Narrow ribbon. Tiny wrapped package.
- Elmer's White Glue – All Glue (for fabric stiffener). Hot glue gun and glue sticks.

<http://www.pattern-making.com/>

Lady

Instructions

1 Crochet

Head, upper body and skirt. Ch 4, sl st to form ring.

Rnd 1. Ch 3 (first hdc, ch1) * hdc in ring, ch 1. Repeat from * seven more times. Sl st in 2nd ch of ch 3 to join. (9 hdc)

Rnd 2. Ch 2, hdc in each st around. Sl st to join. (18)

Rnds 3 – 7. Repeat Rnd 2. Slip in the Styrofoam egg form the head. (Note: This egg will remain in the finished crocheted piece.)

Rnd 8. Ch 2, * skip 1 hdc, hdc in next hdc. Repeat from * around. Sl st to join. (9)

Rnd 9. Ch 2, hdc in each hdc around. Sl st to join.

Rnd 10. Ch 1, sc in same st. *Ch 3, sc in next hdc. Repeat from * around. Ch 1, hdc in first ch 1, sc to join. (9 ch – 3 loops).

Rnd 11. Ch 1, sc in same st. * Ch 3, sc in next ch – 3 loop. Repeat from * around. Ch 1, hdc in first ch 1, sc to join(9 ch-3 loops).

Rnds 12 – 15. Repeat Rnd 11.

Rnd 16. Ch 1, sc in same st. * Ch 2, sc in next ch-3 loop. Repeat from * around. Sl st in ch 1, sc to join.

Rnd 17. Ch 3, * 2dc in next ch-2 loop, 1 dc in next sc. Repeat from * around. Sl st in top of ch 3 to join.

Rnd 18. Ch 4, * skip one dc, dc in next st, ch 1. Repeat from * around skirt. Sl st in 3rd ch of ch 4 to join.

Rnd 19. Ch 4, * dc in next dc, ch 1. Repeat from * around skirt. Sl st in 3rd ch of ch 4 to join.

Rnds 20-21. Repeat **Rnd 19**.

Rnd 22. Ch 5, dc in next dc. * Ch 2, dc in next dc. Repeat from * around. Ch 2, sl st in 3rd st of ch 5 to join.

Rnds 23-24. Repeat **Rnd 22**.

Rnd 25. Ch 6, dc in next dc. *Ch 3, dc in next dc. Repeat from * around. Ch 3, sl st in 3rd ch of ch 6 to join.

Rnds 26-27. Repeat Rnd 25.

Rnd 28. Ch 2, * 3 hdc in next ch-3 loop, hdc in next dc. Repeat from * around. Sl st to join.

Rnd 29. Ch 1, sc in same st. * Ch 3, sc in next hdc. Repeat from * around. To join, ch 1, hdc in first ch-1 sc.

Rnd 30. Ch 1, sc in same st. * Ch 3, sc in next ch-3 loop. Repeat from * around. To join, ch 1, hdc in first ch-1 sc.

Rnd 31. Repeat **Rnd 29**. Tie off.

<http://www.pattern-making.com/>

Sleeve (*make 2*). Ch 4, sl st to form a ring.

Rnd 1. Ch 1, sc in same space, * ch 3, sc in the ring. Repeat from * three more times. Ch 1, hdc in first (ch 1, sc) st to join. (5 ch-3 loops)

Rnd 2. Ch 1, sc in same space. * Ch 2, sc in next ch-3 loop. Repeat from * three more times. Ch 1, sc in first (ch 1, sc) st to join. (5 ch-2 loops).

Rnds 3-13. Repeat **Rnd 2**, except you will sc in ch-2 loop.

Rnd 14. Ch 2, hdc in each ch-2 loop around. Sl st to join. Tie off.

Muff. Ch 16, sl st to form a ring.

Rnd 1. Ch 2, hdc in each st around the chain, sl st to join. (16 hdc)

Rnd 2. Ch 3 (first dc), work 4 more dc in same st. Drop loop from the hook, insert hook in top st of ch 3, and draw dropped loop through (one popcorn stitch made), * ch 1, skip 1 hdc, make 5 dc in next hdc, repeat popcorn stitch pattern. Repeat from * around. Ch 1, sl st in top of first popcorn st to join. (8 popcorn sts)

Rnd 3. Sl st to first ch-1 space. Repeat the popcorn st in each ch-1 space. Sl st to join. (8)

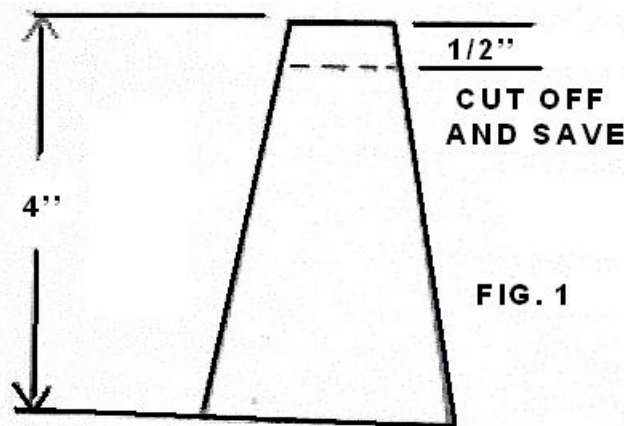
Rnd 4. Repeat **Rnd 3**.

Rnd 5. Ch 2, hdc in each st around. Sl st to join; tie off. (16 hdc) (*Note: Set aside; do not stiffen.*)

2 Stiffen and shape. (**Note:** All forms must be covered with plastic wrap, including dowel rods and chenille stems, before shaping crochet for easy release after they dry. Some molding by hand is required during drying to obtain proper shape. Keep a damp washcloth handy for wiping glue off your hands as you do the shaping. After shaping crochet around the forms, pin to plastic – covered foam base.)

In a bowl, mix the stiffening solution as follows: Four parts white glue to one part water. Mix well. Dip all crocheted pieces into solution, then squeeze out excess glue. Roll in a paper towel to blot out the rest of the glue.

Upper body and skirt. Cut $\frac{1}{2}$ " off top of cone (Fig.1) (*Note: Save the $\frac{1}{2}$ " piece for Gent's body.*)



Insert a toothpick in bottom of a foam egg, then into top of cone (Fig. 2). Cover entire

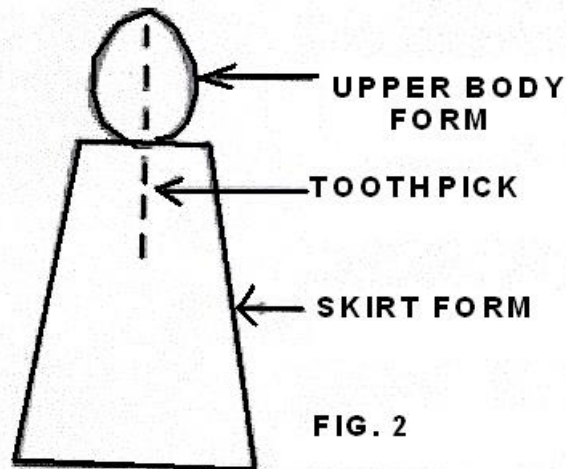


FIG. 2

form with plastic wrap. Pull crocheted piece over the form, positioning crocheted head on center of "upper body" egg. Pin around head to hold it in place. Shape upper body around egg; secure with pins. Shape skirt on the cone. Place on a foam base. Shape bottom of glue around hairline (Fig. 5), and smooth hair down over the glue.

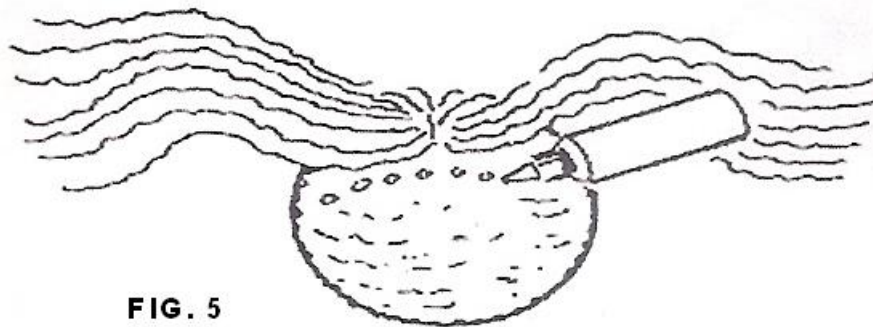


FIG. 5

Let dry; then pull hair up on top of head and twist into a bun. Secure bun to head with glue. Wrap narrow ribbon around bun and tie in a bow (Fig. 6).

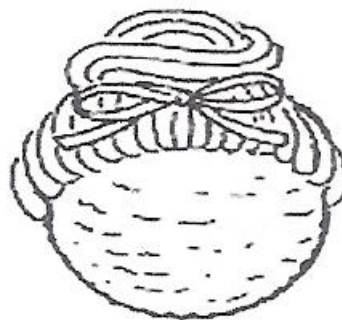


FIG. 6

Cape. Cut a 2" * 5" rectangle of lace. Fold short edges under and glue. Run a gathering stitch along raw edge. Gather to fit around neckline; glue in place.

Glue narrow ribbon around neckline of cape, and around waist, ending in a bow. Hot - glue one sleeve to either side of body. Insert ends of sleeves in muff.

Gent

INSTRUCTIONS

1 Crochet.

Head and upper body. Ch 4, sl st to form a ring.

Rnd 1. Ch 3 (first hdc, ch 1), * hdc in ring, ch 1. Repeat from * seven more times. Sl st in 2nd ch of ch 3 to join. (9 hdc)

Rnd 2. Ch 2, hdc in each st around. Sl st to join. (18)

Rnds 3-7. Repeat **Rnd 2**. Slip in Styrofoam egg (rounded end first).

Rnd 8. Ch 2, * skip 1 hdc, hdc in next hdc. Repeat from * around. Sl st to join. (9)

Rnd 9. Ch 2, hdc in each hdc around. Sl st to join. (9)

Rnd 10. Ch 1, sc in same st, “ ch 3, sc in next hdc. Repeat from * around. Ch 1, hdc in first (ch 1, sc) st to join. (9 ch-3 loops)

Rnd 11. Ch 1, sc in same st, * ch 3, sc in next ch-3 loop. Repeat from * around. Ch 1, hdc in first (ch 1, sc) st to join. (9 ch-3 loops)

Rnds 12-15. Repeat **Rnd 11**.

Rnd 16. Ch 1, sc in same st, * ch 2, sc in next ch-3 loop. Repeat from * around. Sl st in ch 1, sc to join.

Rnd 17. Ch 2, * work 2 hdc in next ch-2 loop, 1 hdc in next sc. Repeat from * around. Sl st in top of ch 2 to join. Tie off.

Pants. Ch 26, sl st to form a ring.

Rnd 1. Ch 2, hdc in each ch st around. Sl st to join (26 hdc).

Rnd 2. Ch 4, trc in each hdc around. Sl st to join. (26 trc)

Rnd 3. Ch 4, trc in each trc around. Sl st to join. (26)

Rnd 4. (beginning of leg). Ch 4, trc in next trc. Work 12 more trc around. Sl st in top of first ch 4 to join. (13 trc)

Rnds 5-9. Ch 4, trc in each trc around. Sl st to join. Tie off. (13 trc)

Repeat for other pant leg, attaching thread to first trc of body. Repeat Rnds 4-9. When finished, turn inside out and tie at center between legs with a piece of crochet thread. Turn right side out.

Sleeve (make 2). Ch 4, sl st to form a ring.

Rnd 1. Ch 1, sc in same space. * Ch 3, sc in ring. Repeat three more times. Ch 1, hdc in first (ch ,sc) st to join. (5 ch-3 loops)

Rnd 2. Ch 1, sc in same space, * ch 2, sc in next ch-3 loop. Repeat from * three more times. Ch 1, sc in first (ch 1, sc) st to join. (5 ch-2 loops)

Rnds 3-13. Repeat **Rnd 2**, except you will sc in ch-2 loop.

Rnd 14. Ch 5, sl st in 3rd ch, hdc in same ch-2 loop. * Hdc in next ch-2 loop, ch 3, sl st in top of hdc, hdc in same ch-2 loop (one picot stitch made). Repeat from * around. Sl st in ch 2 of first ch 5 to join; tie off. (5 picots)

Jacket. Row 1. Ch 17, hdc in 3rd ch from hook, hdc in each ch across, turn. (16 hdc)

Row 2. Ch 2, skip first hdc, hdc in next, (decreasing 1 st) hdc in each of next 11 hdc's, skip next hdc, hdc in next hdc, turn. (14 hdc)

Row 3. Ch 2, skip first hdc, hdc in next hdc, hdc in next 10 hdc, skip next hdc, hdc in last hdc, ch 4; tie off. Attach thread to other side of collar, ch 5, turn.

Row 4. Hdc in 3rd ch of ch 5, hdc in next 2 hdc, ch 2, sc in next hdc. Repeat from * across to last ch 4. Hdc in each of 4 sts of the chain, turn. (*Note: The Hdc's at each end begin the lapel.*)

Row 5. Ch 2, hdc in next 3 hdc, * ch 2, sc in next ch-2 loop. Repeat from * across to the last 4 hdc, hdc in each hdc, turn.

Rows 6-9. Repeat **Row 5**.

Row 10. Ch 3, skip 1 hdc, sc in next st, ch 2, skip 1 hdc, sc in next st, ch 2, sc in next ch-2 loop. Work pattern across to last 4 hdc's, then ch 2, skip 1 hdc, sc in next, ch 2, skip 1 hdc, sc in last hdc, turn.

Row 11. Ch 3, sc in next ch-2 loop, * ch 2, sc in next ch-2 loop. Repeat from * across, turn.

Rows 12-14. Repeat **Row 11**.

Row 15. Ch 3, sc in next ch-2 loop, * ch 2, sc in next ch-2 loop. Repeat from * across five more times, turn. (7 ch-2 loops)

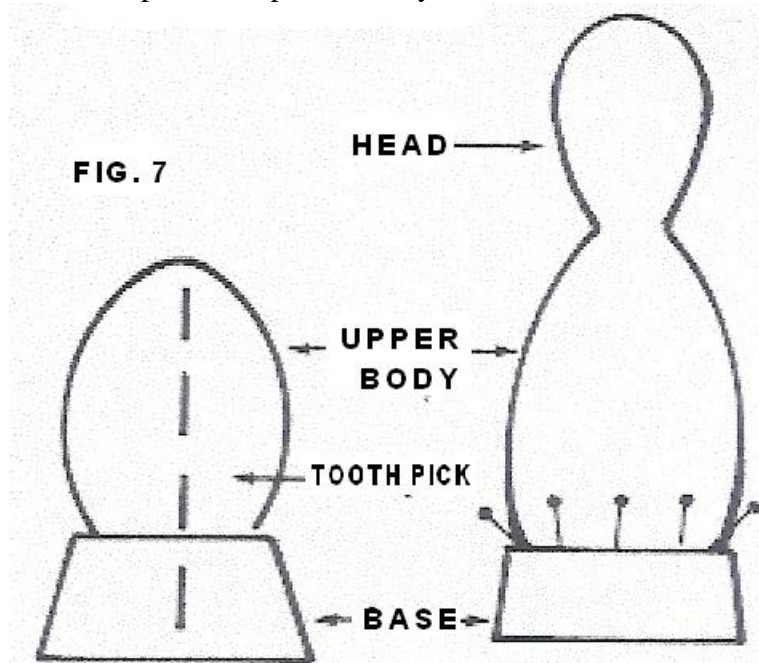
Row 16. Ch 3, sc in next ch-2 loop, * ch 2, sc in next ch-2 loop. Repeat from * across, turn.

Rows 17-18. Repeat **Row 16**; tie off. Attach thread to other side of jacket and work **Rows 15-18**. Ch 1, work sc's all the way around jacket, as many as needed to keep jacket flat; tie off.

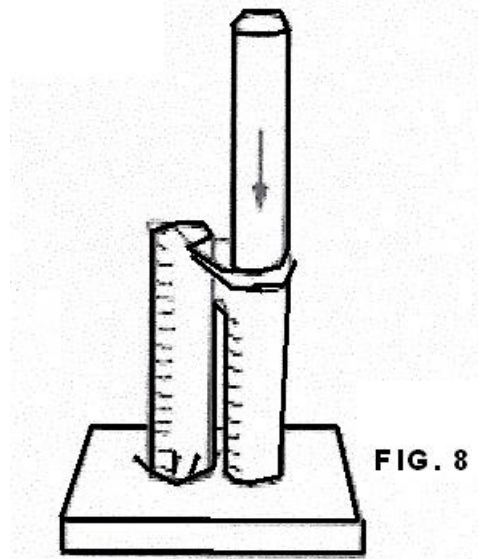
<http://www.pattern-making.com/>

2 Stiffen and shape. (*Note: Refer to special instructions under **Lady** before proceeding.*)

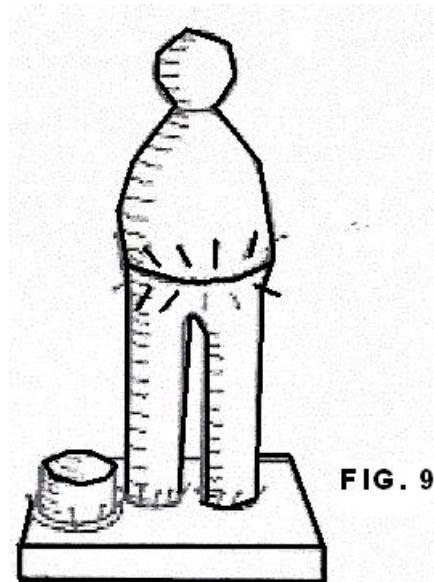
Upper body and pant legs. Use the 1/2 " top of cone saved from the **Lady's** form, and a 1" Styrofoam egg. Insert toothpick through rounded bottom of egg, then into 1/2 " base. Cover with plastic wrap, pinning underneath to hold. Pull the crocheted piece over the egg. Secure the crocheted head in center of "upper body" egg with pins. Stretch the crocheted piece and pin half-way down around the cone base (Fig 7).



Wrap each dowel rod with plastic. Insert one rod in each pant leg; pin to Styrofoam sheet (Fig. 8). Place upper body on top of pants and pin to match.



Hat. Shape crown over 1" high and 1" wide bottle cap; curve brim upward slightly (Fig. 9).



Sleeves. Fold and wrap chenille stems as you did for the **Lady**. Insert one set in each sleeve; bend arms slightly (for holding package).

Jacket. When upper body is dry, place jacket over body and shape. Allow to dry, then hot – glue in place. Remove forms from sleeves and hot – glue on either side of body.

3 Finishing

Hair. Repeat the same as for **Lady**, except tie hair together at back of neck. Trim hair just below tie.

Glue narrow ribbon around hat where crown meets brim. Glue a tiny bow to front of hat and at neckline of body. Glue tiny package to arms.

<http://www.pattern-making.com/>

