

READING A CHARTED DESIGN

To read a charted design, determine the center of your chart by locating the arrows. Count from the center up to the top row of the design. Then count to the left or the right to the first symbol and start there. Each square on the chart equals one stitch on the fabric. The symbols within the squares are coded on the color key for a [loss color. Usually, each symbol represent a different color. It is easier to work all of one color within an area at one time.

MATERIALS NEEDED FOR CROSS STITCH

FABRIC: Determine the piece size of the fabric needed by dividing the stitch count by the count of the fabric per inch. Some of the most popular counts of fabric are 6, 11, 14 and 18 threads per inch and hard anger (22 threads per inch). Most of the linens are stitched (over two threads of the fabric. Once you've determined the size of the design add at least 6" to the design area. This will give you approximately a 3" border all the way around the design, leaving room for framing or mounting. If you are planning special framing or mounting (oval or round for instance) you may need to leave even more border.

NEEDLE: A tapestry needle is the needle of choice to use for counted cross stitch, as it has a blunt end and will not split the thread of the fabric. A size 24, 25 or 26 tapestry needle will suffice for most designs. If the design that you are stitching has a number of 1/4 or 3/4 stitches.

a candle wicking needle (which has a sharp point) may be helpful as this will allow you to split the threads more easily.

FLOSS: A fine quality six strand 100% cotton floss is most often used for counted cross stitch. The number of strands used depends upon the count of the fabric. Generally, use 6 strand-; for 6 count fabric; use 3 or 4 strands for 11 count; use 3 strands for 14 count; use 1 or 2 strands for 18 count and use 1 strand for 22 count. Backstitching uses 1/2 the number of cross stitch strands: 6ct./3, 11ct./2, 14ct./1, 18 & 22ct/1

OTHER ITEMS YOU WILL FIND USEFUL:

A hoop or frame, scissors (small, sharp embroidery scissors), water erasable pen, line minder and a good light source.

PREPARE MATERIAL: To prepare the material for stitching, machine stitch or whip stitch by hand around edges of fabric with sewing thread to prevent raveling. Do not use tape unless you allow enough fabric to cut off the tape when you are finished. Pulling it off may pull a thread of the fabric out all the way across the design.

LOCATING CENTER OF FABRIC: Measure, or fold the fabric in half two times.

Length wise and crosswise. Add at least a 4-6" border for finishing. Mark your center by creasing the folds, or by basting a temporary guide line of thread, or with a water erasable marker.

STITCHING THE DESIGN

Place the fabric in the hoop or on a scroll frame. Carefully tighten the fabric and then tighten the screw of the hoop. To begin, thread needle (do not knot thread). Leave a short

tail hanging on the back of the fabric. and work your first few stitches over this tail. to secure it. Use a two step method to cross stitch. Come up at point A, down at point B. This is considered a half cross stitch. Next. come back up at C and down at D. Continue across the row to the end.

When you reach the end of the row. turn and come back. crossing the first stitches as you go.



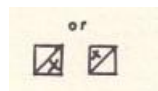
ILLUSTRATION 1

ALWAYS CROSS ALL STITCHES IN THE SAME DIRECTION THROUGH-OUT THE ENTIRE DESIGN .

You may jump over a few stitches to get from one area to another. but never more than one inch. NEVER jump from

one area to another over material that will remain unworked. To Finish off a thread, run the needle under several (at least four) stitches on the back of your design, and then cut it close to the fabric on the back of the design. Occasionally a 3/4 stitch is called for on the chart. It will appear on the chart as a symbol drawn in one half of the square as follows:

ILLUSTRATION 2



To stitch it on the material you come up at point A and go down at point B for a half cross stitch. Then come up at C and go down at D midway between A and B. You may have to split the threads of the fabric in order to accomplish this (a candle wicking needle is often helpful.) The 3/4 stitch is generally on the side in which you want more fullness in the design.

ILLUSTRATION 3

Backstitching is indicated on the chart by a straight heavy line or a wiggly line. Wait until you have completed all of the cross stitch to go back and finish the backstitching. The method we prefer is the double running stitch. You begin by bringing your needle from the back of the fabric at A, make one stitch and go from the front to back of fabric at point B. Skip the next stitch and come from the back of the fabric at point C and take a stitch returning needle to the back of the fabric at point D. Repeat. skipping every other stitch until you reach the end of that line. Change direction and go back. placing a stitch in each one that you skipped the first time. This way both sides of the fabric will look the same.

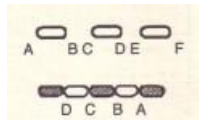


ILLUSTRATION 4

COUNTED CROSS STITCH OVER TWO THREADS:

Quite often a pattern will call for stitching a design over two threads of the fabric. This term can sometimes be misleading.

as you are really stitching over a block of four squares. You must count over two threads and up two threads to keep your design in square. This technique is most often used when working with linen or linen-like fabrics.

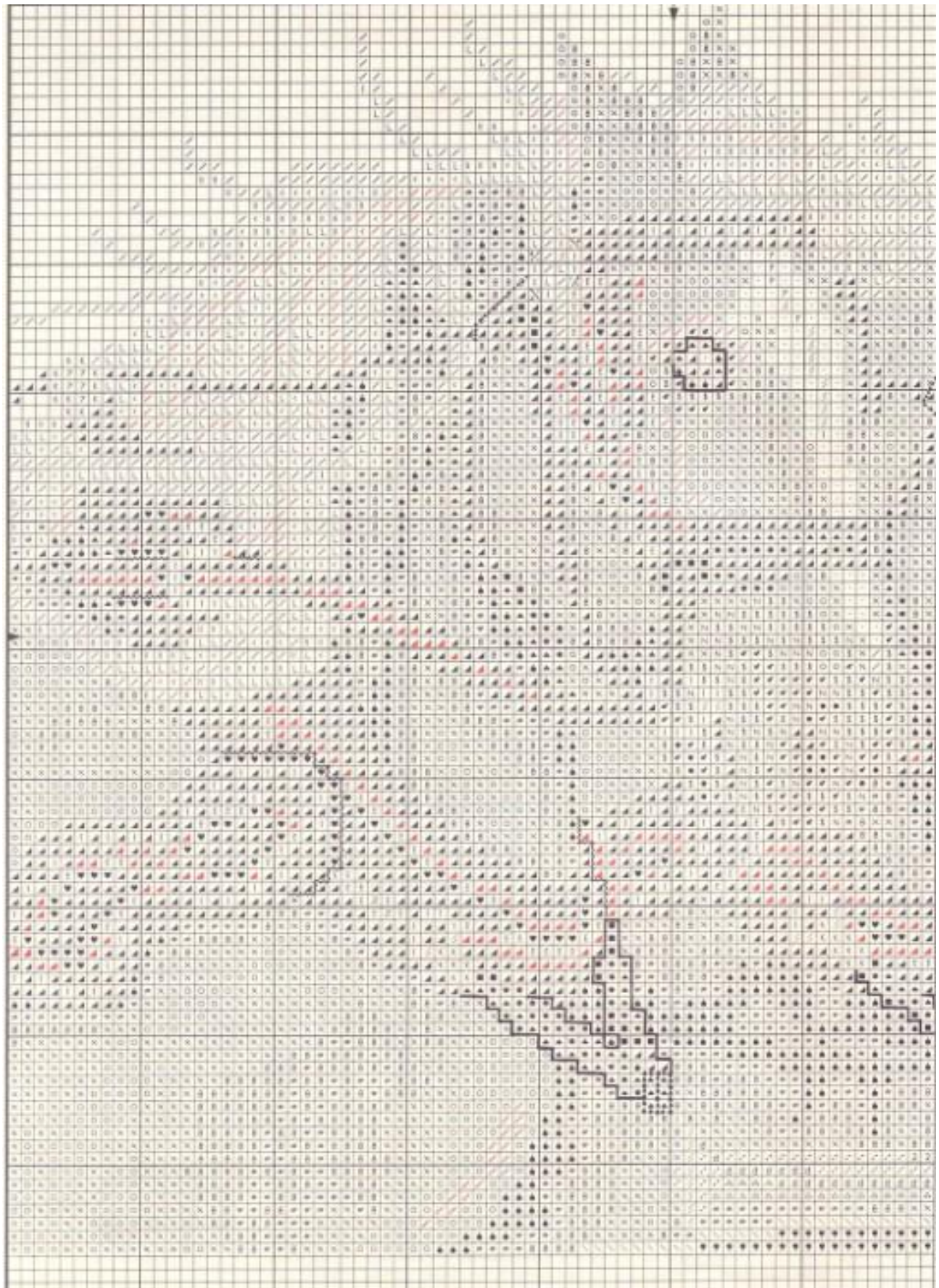


ILLUSTRATION 5

Try to keep the fabric as clean as possible while you are working on it. With your hands with soap and warm water to remove dirt and on before each time that you begin stitching. Do not eat and stitch at the same time. As any oil or grease on your fingers will be absorbed in the fabric. When you are not working on the model, take it out of the hoop. When you are completely finished, wash in warm water with a mild detergent. Rinse well under cold running water.

DO NOT WRING! Wringing will leave Wrinkles on the fabric that will be almost impossible to get out Iron dry while still damp with the design face down on a towel or other padded surface. Do not iron over the front surface of the stitches. This will cause them to be flat and to lose the nice "cross stitch" effect.

<http://www.pattern-making.com/>





BELGIAN TEAM

Samson & Delilah

Stitch Count 98H X 100W

Fabric	Approx. Design Area	Cut Fabric
22	4 1/2 by 4 2/3	11 by 11
18	5 1/2 by 5 2/3	12 by 12
14	7 by 7 1/4	13 by 14
11	9 by 9 1/4	15 by 16

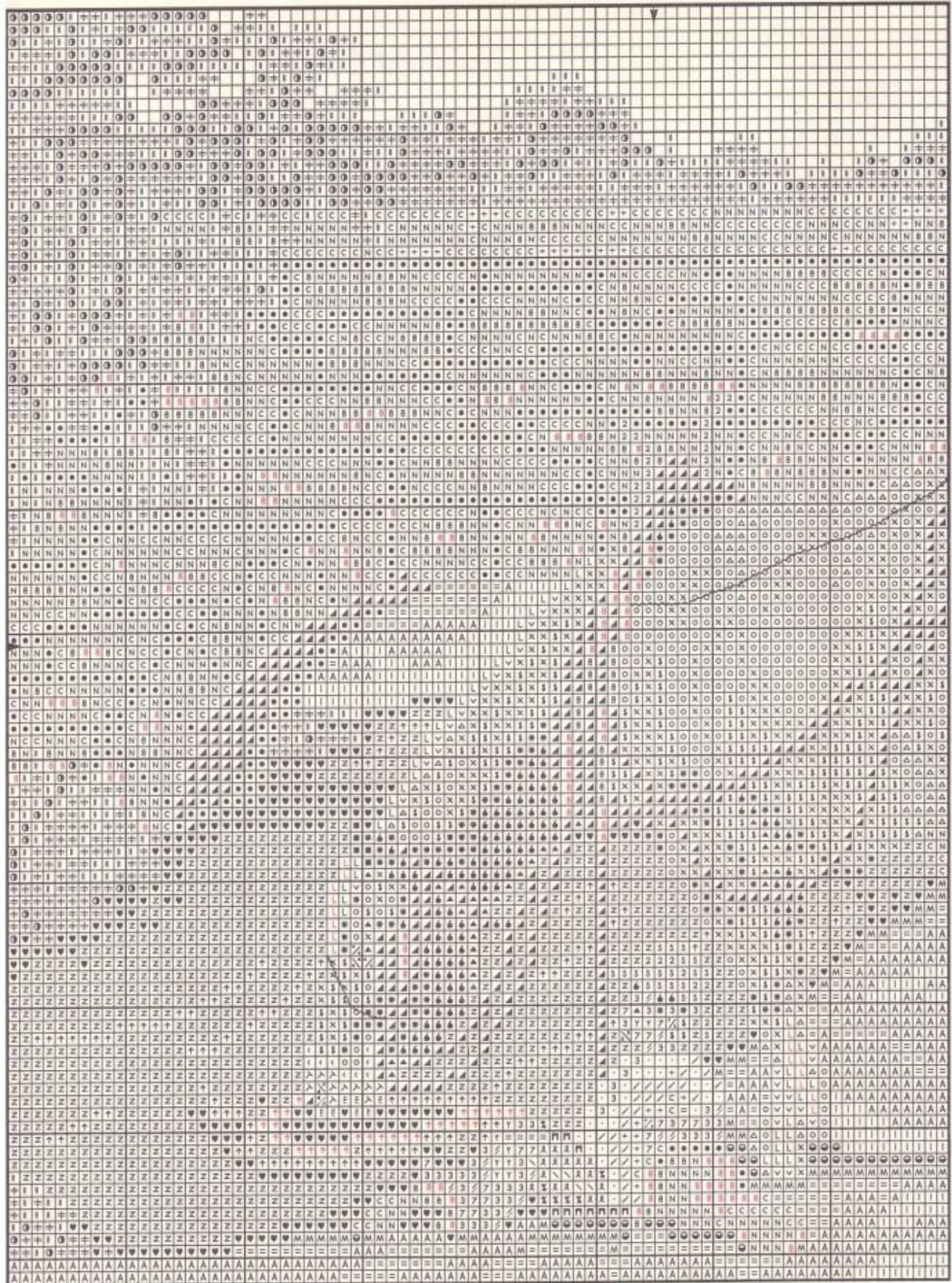
COLOR KEY

Symbol	Color	DMC	Coats	Anchor
.	White	White	1001	2
/	Feni	Exp	5387	387
3	Mahogany	301	-	-
4	Black	310	8403	403
5	Dk. Flannel Gray	317	8512	400
7	Lt. Flannel Gray	318	8511	399
4	Dk. Bing Cherry	321	3500	9046
7	Coral	350	3111	11
4	Vy. Dk. Flannel Gray	413	8514	401
2	Flannel Gray	414	8513	235
7	Vy. Lt. Flannel Gray	415	8398	398
*	Brown	433	5470	357
6	Lt. Brown	434	5000	310
X	Vy. Lt. Brown	435	5371	1046
0	Tan	436	5943	1045
/	Lt. Tan	437	5942	362
4	Dk. Dove Gray	645	8500	273
3	Dove Gray	646	-	-
N	Lt. Dove Gray	647	8900	1040
C	Vy. Lt. Dove Gray	648	8390	900
1	Off White	712	1002	926
7	Sunny Yellow	725	-	-
1	Vy. Lt. Tan	738	5375	361
L	Pale Tan	739	5369	387
1	Silver Gray	762	8510	234
1	Bright Turq	783	5307	307
6	Dk. Coffee Brown	801	5472	359
0	Vy. Dk. Coral Red	817	-	-
9	Chocolate	839	5360	360
7	Lt. Chocolate	840	5379	379
9	Vy. Dk. Dove Gray	844	8501	1041
4	Vy. Dk. Coffee Brown	898	5476	360
8	Ultra Dk. Coffee Brown	938	5381	381
-	Pale Dove Gray	3072	-	-
8	Black Brown	3371	5382	382
2	Lt. Mahogany	3776	-	-
9	Ultra Dk. Flannel Gray	3779	8999	236

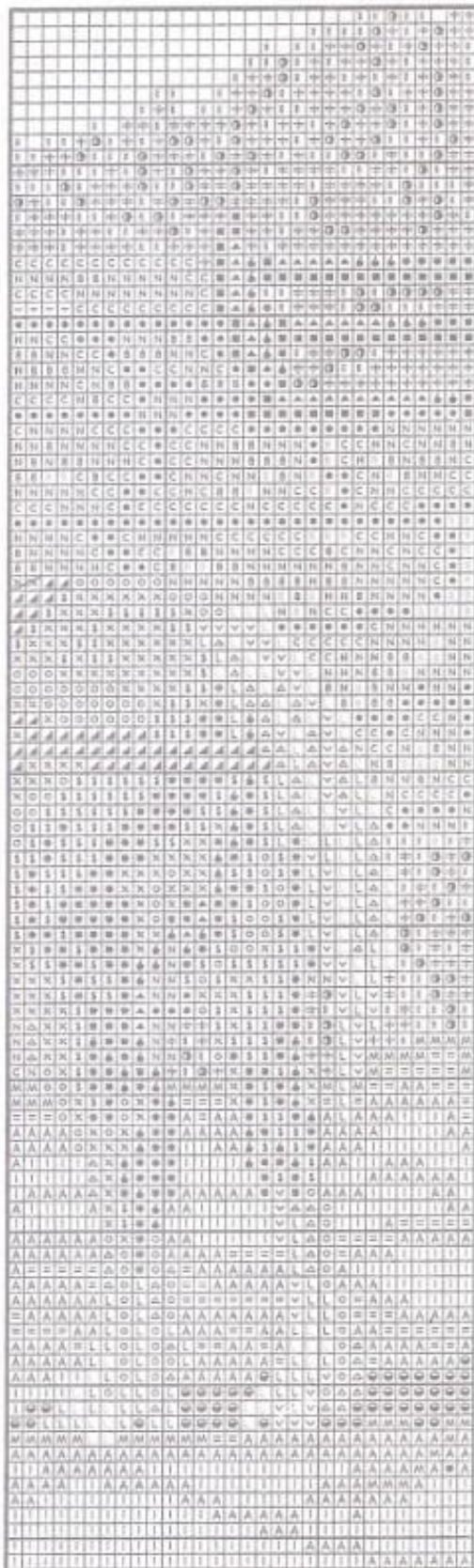
Backstitch:

—	Eyes & harness (1)	310	8403	403
—	Harness (1)	414	8513	235
—	On bridle & harness (1)	762	8510	234

Samson & Delilah is shown stitched on 14 count Celadon Aida fabric by Zweigart® using 3 strands of floss to cross stitch and 1 strand of floss to backstitch. The completed model was mounted in a frame from Four Corners Frames.



AT THE WATER COOLER



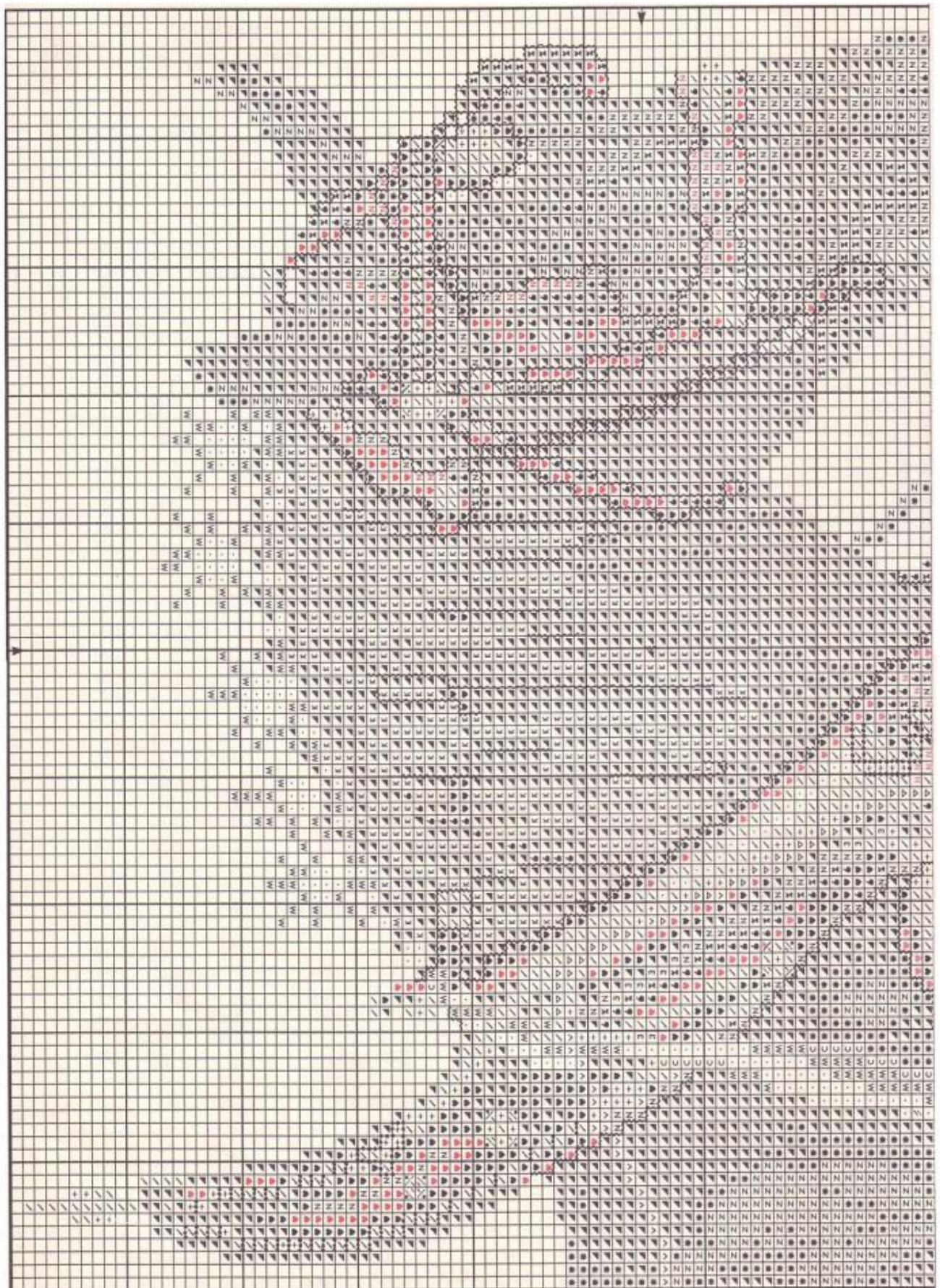
Stitch Count 102H X 110W

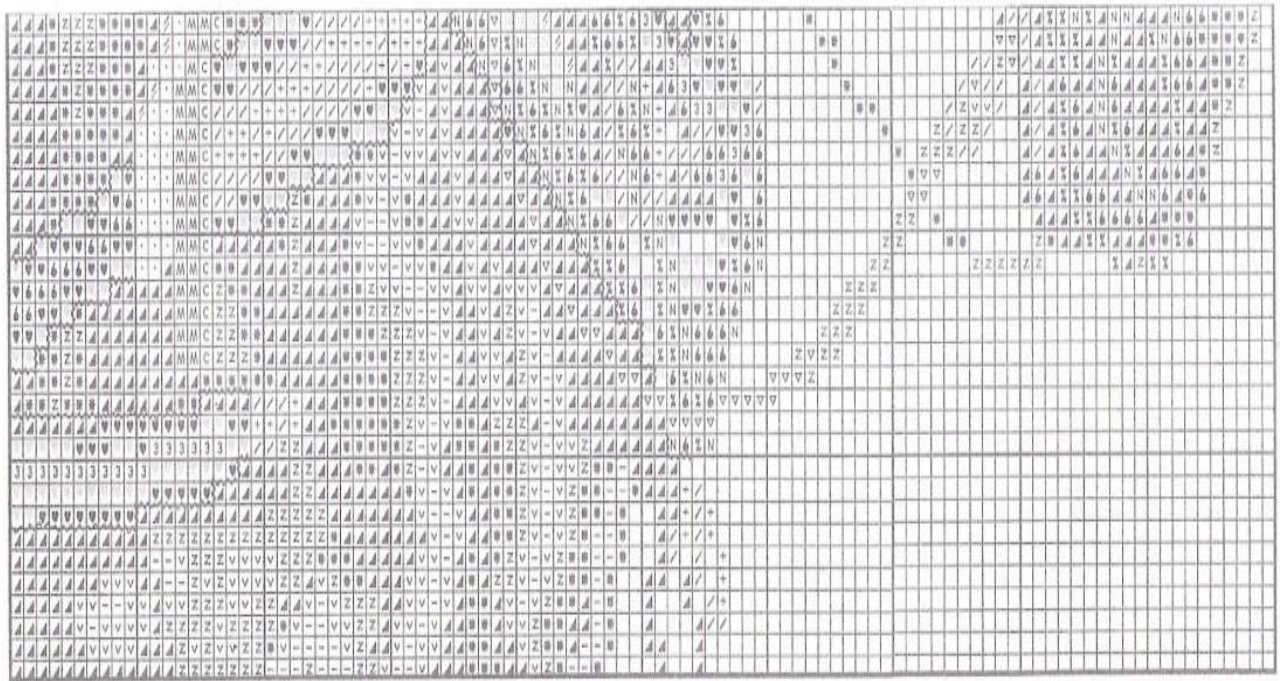
Fabric Count/inch	Approx. Design Area	Cut Fabric
22	4 2/3 by 5	11 by 12
18	5 2/3 by 6 1/4	12 by 13
14	7 1/3 by 8	14 by 14
11	9 1/3 by 10	16 by 16

COLOR KEY

Symbol	Color	DMC	Counts	Anchor
.	White	White	1001	2
A	Black	310	8403	403
B	Dk. Flannel Gray	317	8512	400
C	Lt. Flannel Gray	318	8511	399
D	Vy. Dk. Flannel Gray	413	8514	401
N	Flannel Gray	414	8513	235
+	Vy. Lt. Flannel Gray	415	8398	398
*	Brown	433	5471	358
S	Lt. Brown	434	5000	310
X	Vy. Lt. Brown	435	5371	1046
O	Tan	436	5943	1045
Δ	Lt. Tan	437	5942	362
E	Dk. Blush Gray	451	8233	233
Λ	Blush Gray	452	8232	232
I	Lt. Blush Gray	453	8231	231
=	Avocado Green	469	6261	267
A	Lt. Avocado Green	470	6010	267
I	Vy. Lt. Avocado Green	471	6266	266
3	Lt. Old Gold	676	-	-
.	Off White	712	1002	926
2	Old Gold	729	2875	890
V	Vy. Lt. Tan	738	5375	361
L	Pale Tan	739	5369	387
/	Silver Gray	762	8510	234
4	Dk. Coffee Brown	801	5472	359
▲	Vy. Dk. Coffee Brown	898	5476	360
♥	Dk. Teal	924	6008	851
†	Lt. Teal	926	-	-
T	Vy. Lt. Teal	927	6006	848
X	Dk. Blue Gray	930	7052	1035
2	Blue Gray	931	7051	1034
\	Lt. Blue Gray	932	7050	1033
⊙	Black Avocado Green	934	6270	862
M	Ultra Dk. Avocado Green	936	6269	269
7	Flesh	950	3146	4146
/	Dk. Rose Beige	3064	3883	883
⊙	Dk. Southern Pine	3362	6317	263
#	Southern Pine	3363	-	-
1	Lt. Olive	3364	-	-
■	Black Brown	3371	5382	382
π	Vy. Dk. Blue Gray	3750	-	-
Z	Teal Blue	3768	6007	779
3	Dk. Flesh	3773	-	-
Y	Lt. Terra Cotta	3778	-	-
•	Ultra Dk. Flannel Gray	3799	8999	236
Backstitch:				
—	Black	310	8403	403

Water Cooler is shown stitched on 14 count Lt. Blue Aida fabric by Zweigart® using 3 strands of floss to cross stitch and 1 strand of floss to backstitch. The completed model was mounted in a frame from Four Corners Frames.





PERCHERON

Stitch Count 109H X 99W

Fabric	Approx.	Cut
Count/inch	Design Area	Fabric
22	5 by 4 1/2	11 by 11
18	6 1/4 by 5 1/2	13 by 12
14	8 by 7 1/4	14 by 14
11	10 by 9	16 by 15

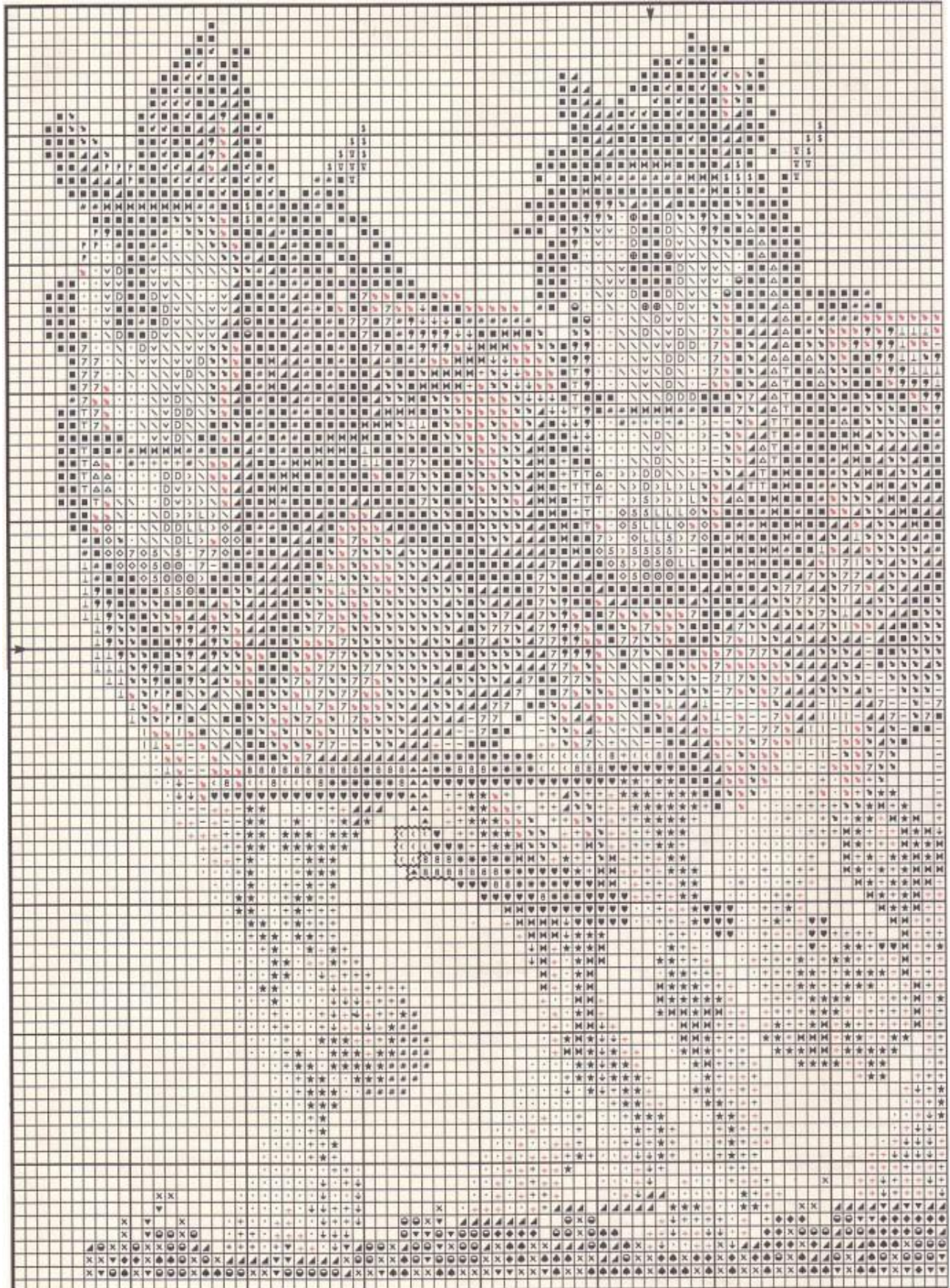
Percheron is shown stitched on 20 count Silver&White Valerie fabric by Zweigart®, over 2 strands of the fabric, using 4 strands of floss to cross stitch and 2 strands of floss to backstitch. To cross stitch the + symbol we used 1 strand of #8 Balger® Braid Gray #025, and to cross stitch the / symbol we used one strand of Silver #001. We have given you the DMC, Coats and Anchor alternatives for these colors. The completed model was mounted in a frame from Four Corners Frames.

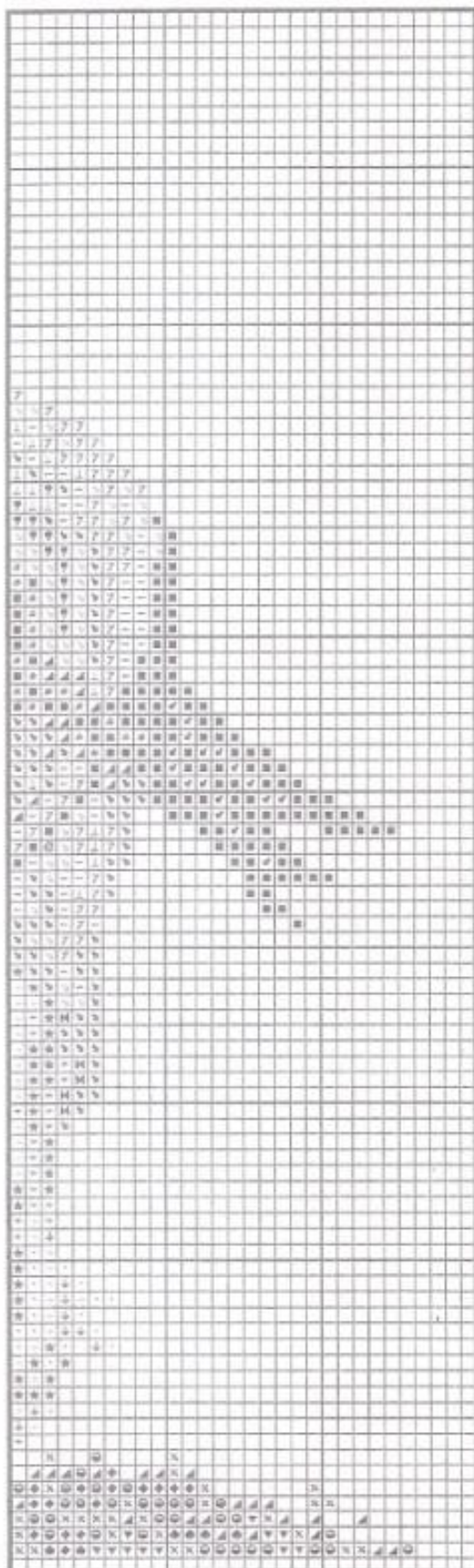
COLOR KEY

Symbol	Color	DMC	Coats	Anchor	Balger®
.	White	White	1001	2	
▲	Black	310	8403	403	
N	Dk. Flannel Gray	317	8512	400	
/	Lt. Flannel Gray	318	8511	399	
3	Vy. Dk. Prussian Blue	336	7981	150	
C	Dk. Coral	349	2335	13	
%	Vy. Dk. Flannel Gray	413	8514	401	
	Flannel Gray	414	8513	235	
+	*Vy. Lt. Flannel Gray	415	8398	398	*025
K	Charcoal Gray	535	8400	-	
/	*Silver Gray	762	8510	234	*001
∇	Dk. Coffee Brown	801	5472	359	
M	Vy. Dk. Coral Red	817	-	-	
●	Navy Blue	823	7982	152	
v	Vy. Dk. Coffee Brown	898	5476	360	
z	Ultra Dk. Coffee Brown	938	5381	381	
♥	Blue Black	939	7160	152	
-	Lt. Mocha Brown	3032	5832	903	
*	Black Brown	3371	5382	382	
6	Ultra Dk. Flannel Gray	3799	8999	236	

Backstitch:

.....	In bridle & harness yoke (2)	310	8403	403
~~~~~	Bridle, mane, harness,yoke (2)	762	8510	234





# CLYDESDALE TEAM

Stitch Count 98H X 104W

Fabric Count/inch	Approx. Design Area	Cut Fabric
22	4 1/2 by 4 3/4	11 by 11
18	5 1/2 by 6	12 by 12
14	7 by 7 1/2	13 by 14
11	9 by 9 1/2	15 by 16

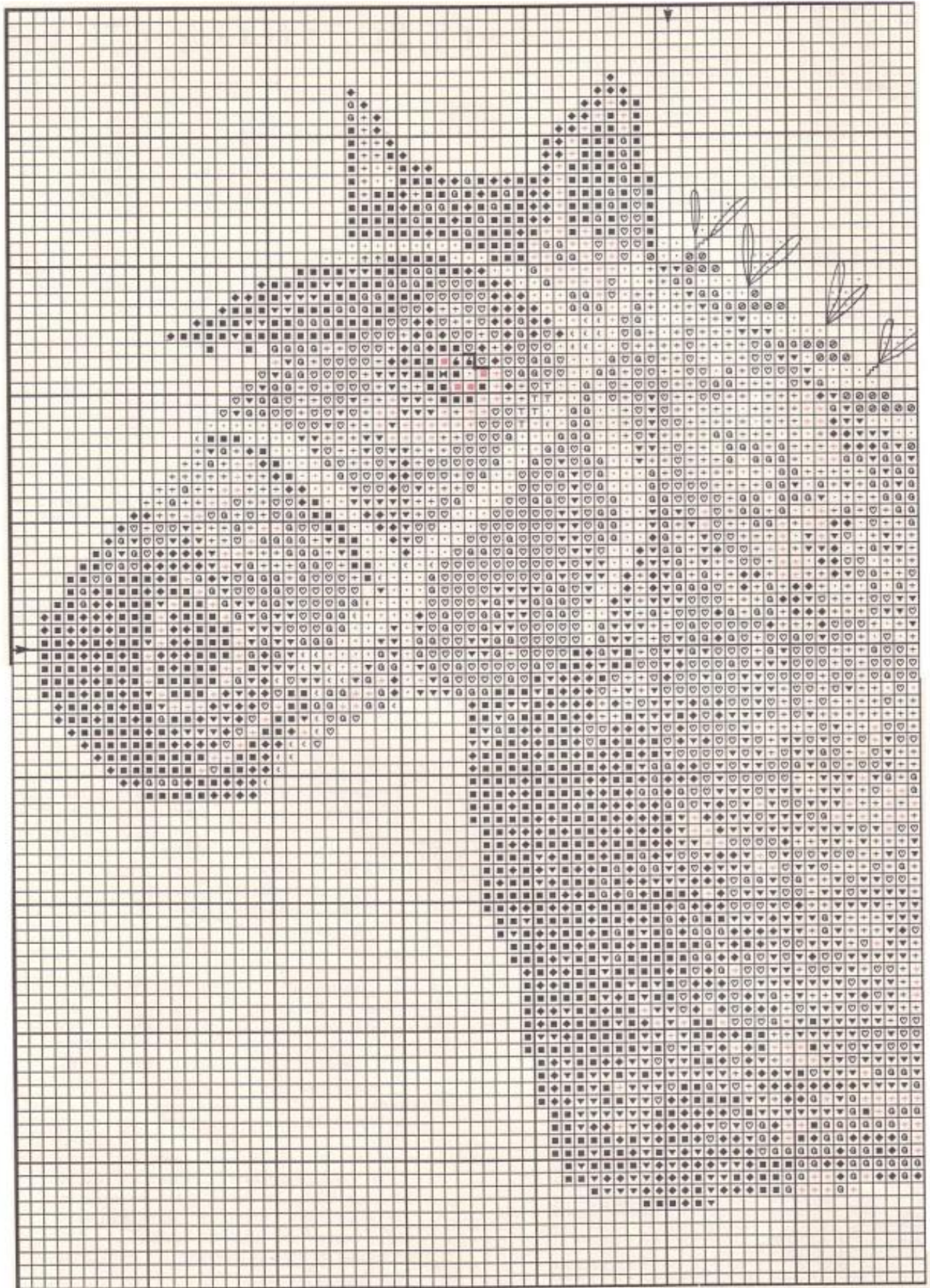
## COLOR KEY

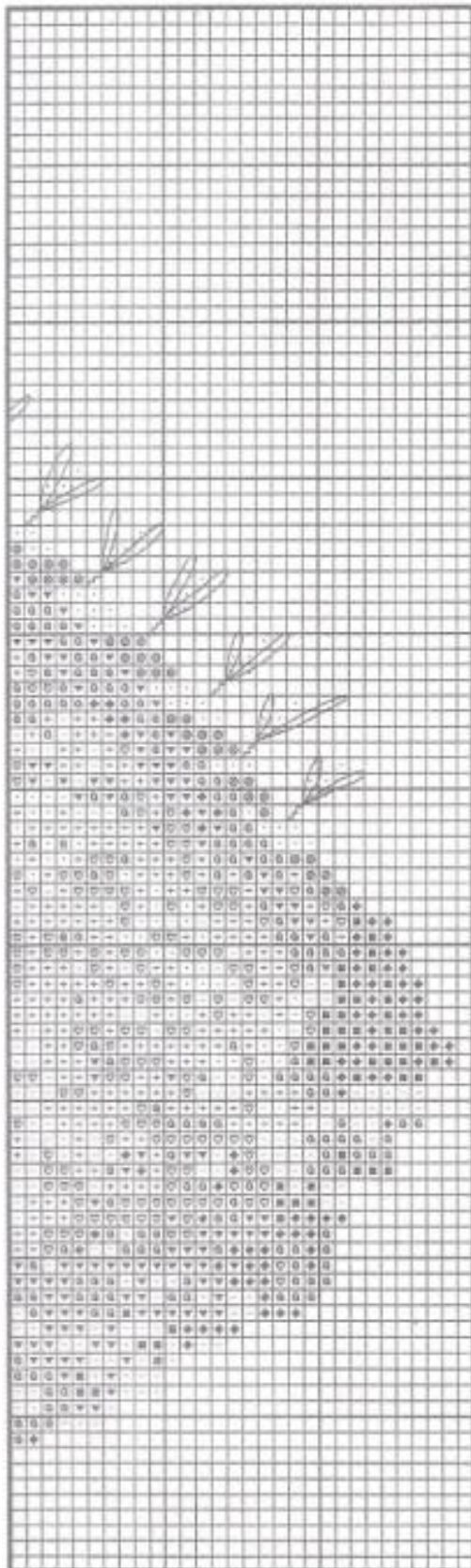
Symbol	Color	DMC	Coats	Anchor
.	White	White	1001	2
▲	Vy. Dk. Mahogany	300	-	-
■	Black	310	8403	403
D	Lt. Flannel Gray	318	8511	399
✓	Vy. Dk. Flannel Gray	413	8514	401
⊖	Flannel Gray	414	8513	235
∨	Vy. Lt. Flannel Gray	415	8398	398
l	Lt. Ash Peach	543	5533	933
△	Lt. Khaki	612	-	853
T	Vy. Lt. Khaki	613	-	956
♀	Dk. Rose Brown	632	5936	936
H	Dk. Dove Gray	645	8500	273
*	Dove Gray	646	-	-
+	Lt. Dove Gray	647	8900	1040
+	Vy. Lt. Dove Gray	648	8390	900
∖	Silver Gray	762	8510	234
∕	Dk. Topaz	781	5309	309
5	Bright Topaz	783	5307	307
⊕	Dk. Coffee Brown	801	5475	359
∩	Dk. Chocolate	838	5478	380
∪	Chocolate	839	5360	360
7	Lt. Chocolate	840	5379	379
-	Vy. Lt. Chocolate	841	5376	378
l	Pale Chocolate	842	-	-
⊗	Vy. Dk. Dove Gray	844	8501	1041
⊙	Vy. Dk. Coffee Brown	898	5476	360
⊛	Ultra Dk. Coffee Brown	938	5381	381
L	Flesh	950	3146	4146
⊠	Vy. Dk. Mocha Brown	3031	-	-
⊡	Lt. Mocha Brown	3032	5832	903
c	Pale Mocha Brown	3033	5831	391
⊖	Dk. Rose Brown	3064	3883	883
-	Pale Dove Gray	3072	-	-
∇	Hunter Green	3346	-	-
X	Lt. Hunter Green	3347	-	-
▲	Black Brown	3371	5382	382
o	Vy. Lt. Peach Beige	3770	3334	1009
f	Rose Brown	3772	5579	1007
5	Dk. Flesh	3773	-	-
>	Lt. Flesh	3774	2336	778
⊛	Mocha Brown	3781	-	-

Backstitch:

— Vy. Dk. Mocha Brown(1)3031

The Clydesdale team is shown stitched on 14 count Yorkshire Driftwood Aida fabric by Zweigart® using 3 strands of floss to cross stitch and 1 strand of floss to backstitch. The completed model was mounted in a frame from Four Corners Frames.





# OLD FASHIONED PERCHERON

Stitch Count 90H X 95W

Fabric	Approx. Design Area	Cut Fabric
22	4 1/4 by 4 1/3	11 by 11
18	5 by 5 1/3	11 by 12
14	6 1/2 by 6 3/4	13 by 13
11	8 1/4 by 8 2/3	15 by 15

COLOR KEY		DMC	Coats	Anchor
-	White	White	1001	2
■	Black	310	8403	403
†	Lt. Flannel Gray	318	8511	399
†	Flannel Gray	415	8513	235
†	Dk. Dove Gray	645	8500	273
○	Dove Gray	646	-	-
○	Lt. Dove Gray	647	8900	1040
○	Vy. Lt. Dove Gray	648	8390	900
†	Silver Gray	762	8510	234
⊕	Vy. Dk. Coral Red	817	-	-
⊕	Vy. Dk. Dove Gray	844	8501	1041
⊕	Vy. Dk. Coffee Brown	898	5476	360
⊕	Ultra Dk. Coffee Brown	938	5381	381
+	Pale Dove Gray	3072	-	-
○	Black Brown	3371	5382	382
Backstitch:				
—	Black (1)	310	8403	403
---	Vy. Dk. Coral Red (1)	817	-	-
Lazy Daisy Stitch:				
⊕	Vy. Dk. Coral Red (1)	817	-	-

**The Old Fashioned Percheron is shown stitched on 14 count Blueberry Aida fabric from Wiehelt Imports, Inc., using 3 strands of floss to cross stitch and 1 strand of floss for the backstitching and the lazy daisy stitches. The completed model was mounted in a frame from Four Corners Frames.**

### Lazy Daisy

**Bring needle up at center of the daisy #1. Reinsert needle into #: 1, immediately slipping needle through #2, being careful to keep thread under needle's point. Complete with a tiny stitch, radiating outward, according to the chart**

