

# FLOWER BASKET SHAWL

design by EVELYN A CLARK

THIS DELICATELY PATTERNED TRIANGULAR SHAWL looks more complicated than it is. The shawl is knitted from the neck down in a double strand of lace-weight alpaca at a gauge of four stitches to the inch. The yarnovers that form the flower-basket lace pattern are worked on right-side rows only; every wrong-side row is purled. The pointed edging flows neatly from the last row of the ten-row pattern repeat, which makes it easy to adjust the size of the shawl. For a smaller version, skip the last repeat and begin the border; for a larger version, work several more baskets before beginning the edging. The final row of the border is worked without decreases for a crisp finish.

**Finished Size** About 54" (137 cm) wide across top edge and 27" (68.5 cm) long from center of top edge to bottom point, after blocking.

**Yarn** Misti Alpaca 2/16 Laceweight (100% alpaca; 437 yd [400 m]/50 g); #NT605 camel, 2 balls (yarn used double throughout).

**Needles** Size 7 (4.5 mm); straight. Adjust needle size if necessary to obtain the correct gauge.

**Notions** Markers (m); tapestry needle; rust-proof blocking pins; blocking wires (optional); size G/6 (4.25-mm) crochet hook; 1 yd (1 meter) contrasting waste yarn.

**Gauge** 16 sts and 24 rows = 4" (10 cm) in St st with yarn doubled, unblocked.

## Notes

You may find it helpful to use markers to set off the center stitch and the 2-stitch garter-stitch edges at each side. The positions of these markers are indicated on the charts.

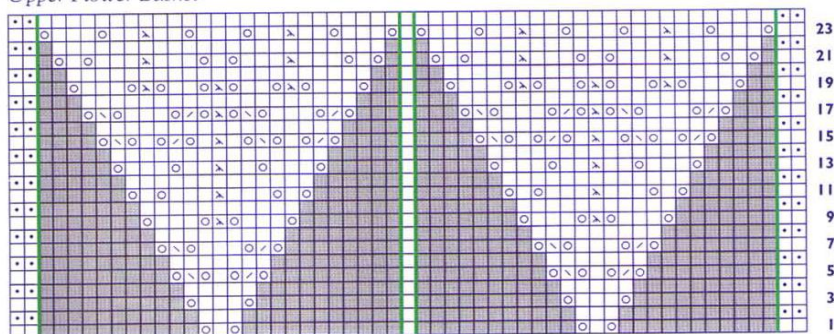
You can increase the size of the shawl by working extra 10-row repeats of the Lower Flower Basket chart (page 66) before beginning the edging. Every additional 10 rows will add about 2¼" (5.5 cm) to the height from center of top edge to bottom

of point, and about 4½" (11.5 cm) to the total "wingspan" across the top edge. Plan to purchase extra yarn if making a larger shawl; the sample here used about 1½ balls of the yarn shown.

## Shawl

With contrasting waste yarn and crochet hook, ch 4 (see Glossary, page 129). With 2 strands of yarn held tog, pick up and knit 2 sts in the bumps on the back side of the center 2 ch—2 sts. Knit 6 rows. *Next row:* K2, pick up and knit 1 st in each of the 3 garter ridges along selvedge edge of piece, unzip waste yarn chain to expose 2 sts at base of piece, place these 2 sts onto left needle, k2—7 sts total. Work Rows 1–24 of Upper Flower Basket chart—55 sts when Row 24 has been completed. Change to Lower Flower Basket chart (page 66). Rep Rows 1–10 of Lower Flower Basket chart 7 times total—195 sts; 94 lace rows; 70 rows of lower chart; 24 rows of upper chart. Change to Edging chart and work Rows 1–10 once—203 sts. *Next row:* K2, slip marker (sl m), yo, k9, yo, [k1, yo, k9, yo] 9 times, sl m, k1 (center st), sl m, [yo, k9, yo, k1] 9 times, yo, k9, yo, sl m, k2—243 sts. BO all sts very loosely as foll: K2, \*transfer these 2 sts back to left needle, k2tog through back loops, k1; rep from \*.

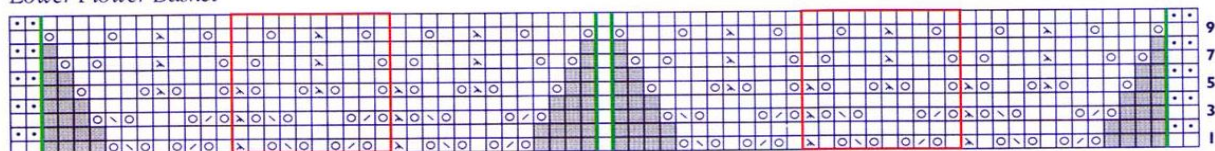
Upper Flower Basket



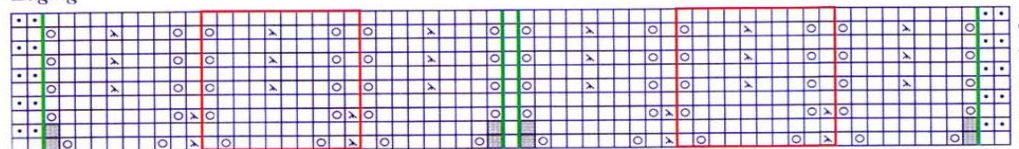
- |   |  |  |
|---|--|--|
| <input type="checkbox"/> k on RS; p on WS | <input checked="" type="checkbox"/> k2tog                                | <input type="checkbox"/> no stitch       |
| <input type="checkbox"/> p on RS; k on WS | <input type="checkbox"/> ssk   | <input type="checkbox"/> pattern repeat  |
| <input type="checkbox"/> yo               | <input type="checkbox"/> sl 1 as if to knit, k2tog, pass slipped st over | <input type="checkbox"/> marker position |



### Lower Flower Basket



### Edging



- |                  |   |                 |
|------------------|---|-----------------|
| k on RS; p on WS | k2tog   | no stitch       |
| p on RS; k on WS | ssk   | pattern repeat  |
| yo               | sl 1 as if to knit, k2tog, pass slipped st over | marker position |

### Finishing

Weave in loose ends, leaving tails 2"–3" (5–7 cm) long; tails will be trimmed flush with surface of shawl after blocking.  
**Blocking:** Soak shawl for at least 20 minutes. Wrap in towel to remove excess water. Lay flat, and smooth into shape. If using blocking wires, run wires through eyelets along top edge and pin to finished measurements. Pull out points along side

edges at each "yo, k1 yo" in last row of edging and pin to finished measurements. Leave in place until thoroughly dry. Carefully trim ends of tails.

EVELYN A. CLARK likes to write and design at her home in Seattle, Washington.

<http://www.pattern-making.com/>